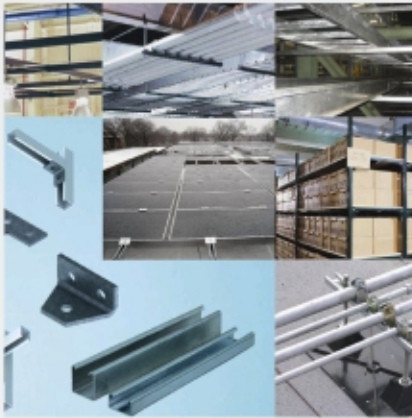




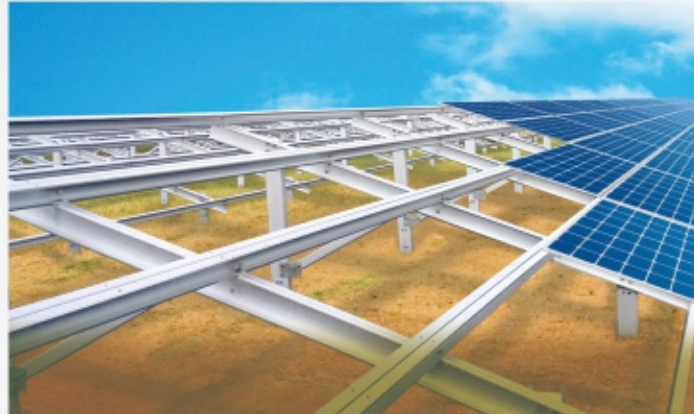
Email: info@channelnutindia.com
Website: www.channelnutindia.com

GURU KIRPA UDYOG

AN ISO 9001 : 2015 CERTIFIED COMPANY



"Committed to quality, service & value!"



Govt. Of India Recognised "One Star " Export House



Channel Spring Nuts | Clamps | Fasteners | Strut Channel & Brackets | Sheet Metal Parts | Stainless Steel Products



ABOUT US

Our experienced team is here to help find the product that's best for you.



GURU KIRPA UDYOG
AN ISO 9001 : 2015 CERTIFIED COMPANY

Director's Desk

The Managing Director Mr. Naresh Kumar himself is having 34 Year's practical experience in this field and resulted the international export quality comes out as a final product from our company to satisfy the customers years and years.

I feel Proud to say that "**GURU KIRPA UDYOG**" has always given more than the expected results and to support the increasing customers demand. Latest technology is being regularly upgraded through R & D department.

Our Mission

GURU KIRPA UDYOG has always made enormous efforts to further upgrade its existing technology, constantly assimilating and absorbing the latest trend in international technology, to meet growing consumer demands of domestic and international customers.

Our Vision

Our main vision is to delight our customers by offering innovative quality products at prices that make the economics work. We envision to grow ourselves and establish ourselves firmly in the industry of Steel Fasteners, Strut Support Systems & Special Sheet Metal components. Over the years, we have kept quality as our forte. We are aimed at delivering superior quality products to satisfy a wide clients base.

About Guru Kirpa Udyog

"**GURU KIRPA UDYOG**" had been established in the year 1986 under the leadership of **Mr. Naresh Kumar** & running this industry is one of the Leading Manufacturers and Exporters of all kinds of Channel Nuts and Accessories i.e. Plain Channel Nuts, Short Springs, Long Springs, L - Brackets, Single Channel Top Brackets, T - Brackets, Z - Brackets, 45 Degree Angle Brackets, Beam Clamps, Double Wide Top Brackets, Channel T - Brackets, Tray Couplers, Window Brackets, Riser Pipes Clamps, Base Plates, Clevis Hangers, Pipe Clamps, Base Plates, Cantilevers Etc.

We are also manufacturing Sheet Metal Parts for some Merchant Exporters.

Guru Kirpa Udyog is committed to developing, manufacturing, delivering and servicing quality products. Our goal is to continuously improve our products and services in order to satisfy the needs of our customers before, during and after sales.

In each of our product category our quality is amongst the best. We use the best quality of raw materials that are tested and subjected to stringent standards as per required specifications. Process capability studies & other statistical tools are employed to check all critical parameters during production. Every batch of finished product undergoes strict, down the line process control monitoring which guarantees superior quality products. As a result, Guru Kirpa Udyog is synonymous with technology, quality and service.



Quality Assurance

From the very beginning, Guru Kirpa Udyog has always shown incessant thirst for Product Quality and Customer Satisfaction. At Guru Kirpa Udyog, each component passes through numerous tests at the stages of design, raw-material inspection & of course throughout the manufacturing process. Conformance to the Quality is just not restricted to the shop floor of the company but also throughout the supply chain.

Guru Kirpa Udyog is AN ISO 9001 : 2015 CERTIFIED COMPANY. We strictly adhere to industrial norms and international quality standards. A team of quality inspectors keeps a strict vigil on all the processes to ensure the production of only flawless products without any defects. Over the years, we have established a solid foundation of trust in the customers minds, delivering high quality products uncompromisingly.

We are committed to manufacture and supply quality products as per our customer & market requirements. For our quality control measure, we are appreciated by our customers. We are deeply realize that gaining someone's trust & reaching new heights of success can take years but the same can be grounded with in no times.

Guru Kirpa Udyog has set strict standards for itself, which it maintains without any compromises. Our focus is on the following areas:

- Knowing the customer's needs
- Faultless planning
- Certified performance
- Timely delivery
- Efficient after sales service
- Feedback & control
- Value for money



AN ISO Certification



Federation of Indian Export Organisations



Fasteners Manufacturers Association Member certificate



One Star Export House Certificate

Infrastructure

At present the Company has its manufacturing facility at Lakhawal Road, Near Power House, Kohara, Ludhiana - 141122, Punjab, India from Since 1986. That lies in every detail of sourcing, crafting, networking, living up to the expectations & finally maintaining that same perfectionism. Our company believes that quality is the lifeline of every business. We are committed to satisfy our customer by manufacture & supply quality products to their entire satisfaction first time & every time with continuous up gradation in quality.

We are manufacturing high quality sheet metal components, Channel Nut under the supervision of our most experience technical staff. Our customers are fully satisfied with the quality of our products & prompt service of our staff.

Our main production facilities are press shop (Press 5T to 200T), Machine shop, Welding shop & have own Tool Room & have in house Zinc Plant, Hot-Dip Galvanizing plant, Hydraulic Press, Turning Machines, Drawing Bar Plant. Our main Testing facilities are Micrometers, Vernier Calipers, Angle Gauges, Dial Gauge, Height Gauge etc.





GURU KIRPA UDYOG

Sizes:

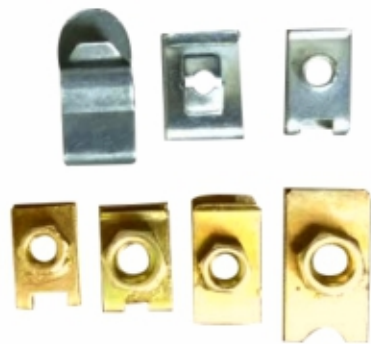
6mm / 8mm / 10mm / 12mm
1/4", 5/16", 3/8", 1/2"

Key Attributes:

Long Spring Designed for
21x41, 41x41, 62x41, 83x41
Strut channel, Stainless Steel,
Zinc Plated, Hot Dip Galvanized
The Channel Nuts are also available in
SS304 (A2) and SS316 (A4)

Finishing / Coating:

Hot Dip Galvanized (HDG)
Mechanical
Bright Zinc Plated
Yellow Passivation
Stainless Steel



Channel Spring Nuts



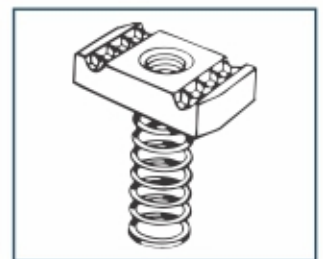
Channel Nut Without Spring



Short Spring Nut



Long Spring Nut



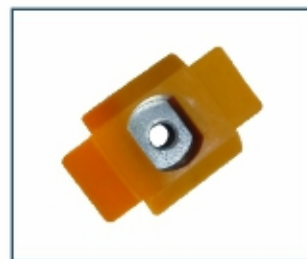
Extra Long Spring Nut



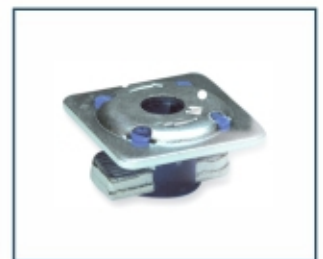
Top Nut Coil Spring



Hammer Head Bolt



Quick Nut (Type 1)



Quick Nut (Type 2)



Metal Fittings

<p>GKU 001</p> <p>FLAT SQUARE WASHER</p>	<p>GKU 002</p> <p>FLAT PLATE 2 HOLE</p>	<p>GKU 003</p> <p>FLAT PLATE 3 HOLE</p>	<p>GKU 004</p> <p>FLAT PLATE 4 HOLE</p>
<p>GKU 005</p> <p>FLAT PLATE 5 HOLE</p>	<p>GKU 006</p> <p>RIGHT ANGLE FLAT BEND</p>	<p>GKU 007</p> <p>FLAT TEE</p>	<p>GKU 008</p> <p>RIGHT ANGEL 1 HOLE 1 HOLE</p>
<p>GKU 009</p> <p>RIGHT ANGEL 1 HOLE 1 HOLE</p>	<p>GKU 010</p> <p>RIGHT ANGEL 2 HOLE 1 HOLE</p>	<p>GKU 011</p> <p>RIGHT ANGEL 2 HOLE 1 HOLE</p>	<p>GKU 012</p> <p>RIGHT ANGEL 2 HOLE 1 HOLE</p>
<p>GKU 013</p> <p>RIGHT ANGEL 2 HOLE 2 HOLE</p>	<p>GKU 014</p> <p>RIGHT ANGEL 3 HOLE 1 HOLE</p>	<p>GKU 015</p> <p>RIGHT ANGEL TEE L / HAND</p>	<p>GKU 016</p> <p>RIGHT ANGEL TEE R / HAND</p>
<p>GKU 017</p> <p>RIGHT ANGEL TEE CENTRE</p>	<p>GKU 018</p> <p>DELTA PLATE RIGHT ANGEL 2 HOLE 2 HOLE</p>	<p>GKU 019</p> <p>DELTA PLATE RIGHT ANGEL 1 HOLE 2 HOLE</p>	<p>GKU 020</p> <p>GUSSET RIGHT ANG 2 HOLE 2 HOLE</p>
<p>GKU 021</p> <p>A = 15 A = 22.5 A = 45</p> <p>OBTUSE ANGEL</p>	<p>GKU 022</p> <p>OBTUSE ANGEL BRACKET</p>	<p>GKU 023</p> <p>OBTUSE ANGEL BRACKET</p>	<p>GKU 024</p> <p>ACUTE ANGEL</p>



<p>GKU 025 45 DEG ANGEL TEE CENTRE</p>	<p>GKU 026 Z BRACKET 20 MM</p>	<p>GKU 027 Z BRACKET 40 MM</p>	<p>GKU 028 Z BRACKET 80 MM</p>
<p>GKU 029 U BRACKET 20 MM</p>	<p>GKU 030 U BRACKET 40 MM</p>	<p>GKU 031 U BRACKET 80 MM</p>	<p>GKU 032 U BRACKET 80 MM</p>
<p>GKU 033 C BRACKET 80 MM</p>	<p>GKU 034 SINGLE BASE PLATE</p>	<p>GKU 035 SINGLE BASE PLATE</p>	<p>GKU 036 DOUBLE BASE PLATE</p>
<p>GKU 037 SINGLE GUSS BASE PLATE</p>	<p>GKU 038 DOUBLE GUSS BASE PLATE</p>	<p>GKU 039 2 LUG WING</p>	<p>GKU 040 TOP BEAM CLAMP</p>
<p>GKU 041 BEAM CLAMP TAPPED</p>	<p>GKU 042 BEAM CLAMP</p>	<p>GKU 043 TAPPED ZEE SUPPORT</p>	<p>GKU 044 WINDOW BRACKET FOR 41 MM</p>
<p>GKU 045 BRACKET WITH U BOLT FOR 41 MM</p>	<p>GKU 046 BRACKET WITH U BOLT FOR 82 MM</p>	<p>GKU 047 SINGLE STRUT WINDOW BRACKET FOR 21 MM</p>	<p>GKU 048 DOUBLE STRUT WINDOW BRACKET FOR 82 MM</p>

Metal Fittings

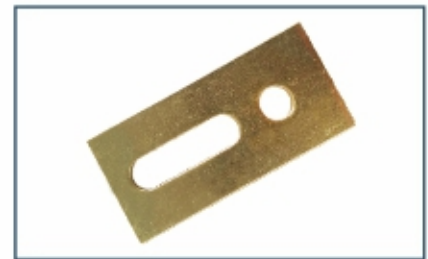
<p>GKU 049</p> <p>EXTERNAL JOINT PLATE 41x41</p>	<p>GKU 050</p> <p>EXTERNAL JOINT PLATE 45x43</p>	<p>GKU 051</p> <p>INTERNAL JOINT PLATE 41x41</p>	<p>GKU 052</p> <p>INTERNAL JOINT PLATE 41x21</p>
<p>GKU 053</p> <p>PURLIN CLIP</p>	<p>GKU 054</p> <p>FLAT CROSS</p>	<p>GKU 055</p> <p>FLAT GUSSET</p>	<p>GKU 056</p> <p>CANTILEVER ARM</p> <p>LENGTH 150 MM 300 MM 450 MM 600 MM 750 MM 900 MM</p>
<p>GKU 057</p> <p>RIGHT ANGLE WING</p>	<p>GKU 058</p> <p>RIGHT ANGLE BEND R/HAND</p>	<p>GKU 059</p> <p>RIGHT ANGLE BEND L/HAND</p>	<p>GKU 060</p> <p>TRAY SUPPORT BRACKET</p> <p>LENGTH 50 MM to 600 MM</p>



GKU 61



GKU 62



GKU 63



GKU 64



Threaded Plate



Conical Spring Nut



GURU KIRPA UDYOG

Industrial Fasteners



Washers (As per DIN 125/126/127)

Diameters: M3 to M80 & 1/8" to 3.2"

Stock Range: Plain Washers, Square Washers, Spring Washers, Heavy Washers, HSFG Washers, Rectangular Washers, DTI washers, High Tensile Washers or Sample Drawing / As per Customer Requirements.

Grades / Raw Material: 100 HV, 140 HV, 200 HV, 350 HV, 400 HV, Spring Steel C-62 & Other grades also available as per customer requirement.



Bolts (As per DIN 931 / 933)

Diameters: M5 to M64 & 3/16" to 2.5"

Length: 12mm to 700mm & 1/2" to 28"

Threads: MM, BSW, BSF, UNC, UNF, UN, NC

Grades / Raw Material: 4.6, 4.8, 5.6, 5.8, 8.8, 10.9, 12.9

Stock Range: Hex Head Bolts & Screws, Square Head Bolts, Flange Bolts, Carriage Bolts, Allen Key Bolts, Etc.



Nuts (As per DIN 555 / 934)

Diameters: M5 to M64 or 3/16" to 2.5"

Stock Range: Hex Nuts, Spring Channel Nuts, Wedge Nuts, Flange Nuts, Castle Nuts, Square Nuts, Nylock Nuts, Anti Theft Nuts, Pal Nuts, Coupling Nuts, Dual Nuts or Sample Drawing / As per Customer Requirements.

Grades / Raw Material: 4.6, 8, 10, 12, 2H, 2HM & Other grades also available as per customer requirement.

Finishing / Coating:

Self Finish, Zinc Plated, Yellow Finish, Black Finish, Hot Dip Galvanized (HDG), Mechanical, Stainless Steel.



Threaded Rods & Studs

Threaded Rods as per
DIN 975 / DIN 976 / BS 916 / ASTM A - 193
/ DIN 976-1 / DIN 976 - 2

Standard:
DIN 975 / 976, ASTM A-193

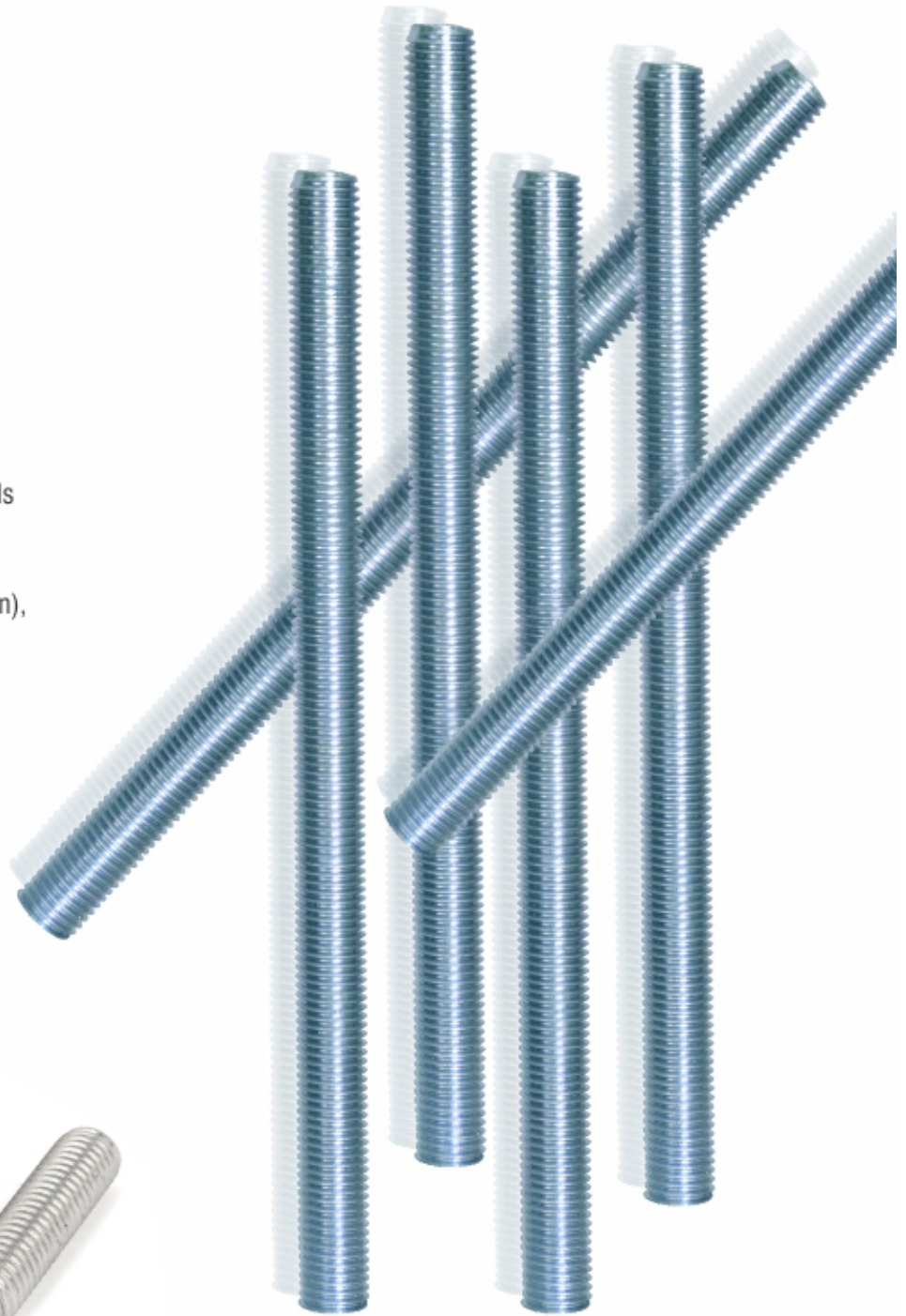
Diameters:
M5 to M60 & 3/16" to 2.5"

Stock Range:
1 meter, 2 meter, 3 meter &
39", 78", 117"

Threads:
MM, UNC, BSW, UNF & BSF

Grades:
Threaded Rods are made of Grade
4.6, 4.8, 5.6, 6.6, 8.8, A307 & A25 Diameter Rods

Finishing / Coating:
Electro Zinc Plated (Blueish White & Yellow Golden),
Mechanical Galvanizing,
Hot Dip Galvanizing, Auto Black,
Self Finish, SS 304, SS 302 (A2, A4)





GURU KIRPA UDYOG

Diameters:

6mm to 16mm or 1/4" to 5/8"

Pipe Size:

12mm to 300mm or 1/2" to 12"

Finishing / Coating:

Hot Dip Galvanized (HDG)
Mechanical
Self / Black / Natural
Yellow Plated
Zinc Plated
Stainless Steel



U-Bolts



GKU 65



GKU 66



GKU 67



GKU 68

Chain Link Fitting & Accessories



Winding Bracket



Brace Band



Post Cap



Rail End



Post Hinges



Frame Hinges



Two Way Brace Bands



Loop Cap



Timber & Wood Connectors



Y Form Timber Connector



L Form Timber Connector



H Form Timber Connector



U Form Timber Connector



U Support with Plates



Joist Hanger



Screw L Bracket



L Bracket Connector

Post Supports



Fence Post Supports



Adjustable Post Supports



Post Anchor



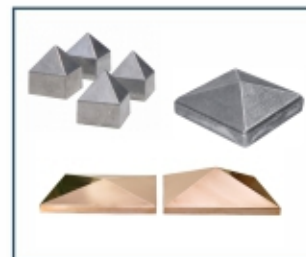
Spiral Pole Anchors



Post Spikes



Ball Post Caps



Pyramid Post Caps

Length:

600, 750, 900 mm

Sizes in mm:

51x51, 71x71, 76x76, 91x91,
96x96, 101x101, 121x121

Finishing / Coating:

Stainless steel
Powder Coated
Electro/Hot dip galvanized



GURU KIRPA UDYOG

Fixing & Other Accessories

*“Safety is the PRIORITY,
Quality is the STANDARD”*



Cast Iron Beam Clamp



Eye Bolt



Hammer Head



Penny Washer



Pipe Clamps



Adjustable Floor Jacks



Cone Pointed Set Screw



Flat Washer



Wedge Nut



Roofing Bolt & Nut



Rod Connector



Spring Washer



Hexagon Head Screw



End Caps



Boss Plate

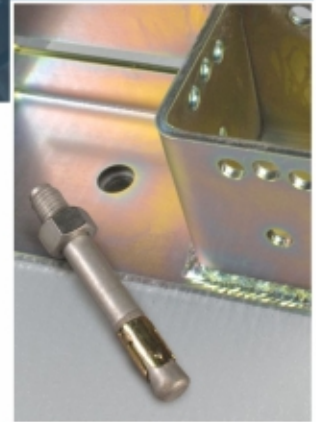


GKU 69



Anchor Fasteners & Accessories

*"We provide an exclusive range
OF PREMIUM QUALITY ANCHOR FASTENERS"*



L Anchor Bolts



Rawl Eye Hooks



L Hook



Drop in Anchor



Sleeve I Hook



Rack Bolt Set



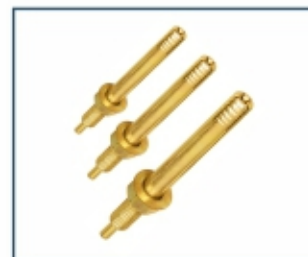
Rawl Bolt Type



Rack Bolt



Fan / D Hooks



Zebra Pin Type



S Hooks



Long Nuts



Sleeve J Hook



Taper Nuts



J Hook



GURU KIRPA UDYOG

Pipe Clamps



Nut Clamp without Rubber



Sprinkler Clamp



Nut Clamp with Rubber



Galvanized Nail Clamps



Clevis Hanger



Rise Pipe Clamp

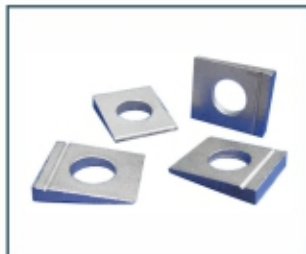


Pipe Clamp



Lined Strap Clamp

Stamping Components



Tapper Washer



C - Channel



C Lip Channel



Base Plate



95-152



50-75-100-125



Centre Brackets



1.5" & 2"

Door Hinges



GKU 70



T Hinges

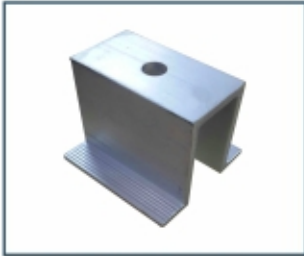


GKU 71

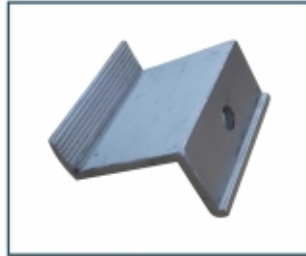


GKU 72

Solar Structure Brackets



Aluminium U Mid Clamp



Z end clamp



Degree Hanger Clamp



Solar Brackets

Cable Trays & Accessories



Cable Tray



Saddle Washer



Ladder Clamp



Clamp Washer



Solar Shed Roof Bracket



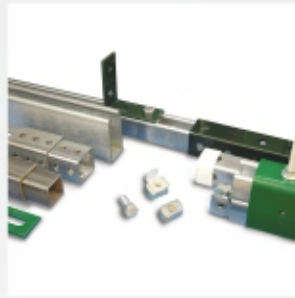
Central Suspension Bracket



Fast Click Connector



GKU 400



GURU KIRPA UDYOG

AN ISO 9001 : 2015 CERTIFIED COMPANY

Lakhowal Road, Near Power House, Kohara,
Ludhiana - 141122 (PB.) INDIA

Mobile: +91-98788-13139, 81461-00339

Email: info@channelnutindia.com, gurukirpaudyog745@gmail.com, info@gurukirpaudyog.in

Website: www.channelnutindia.com, www.gurukirpaudyog.in